

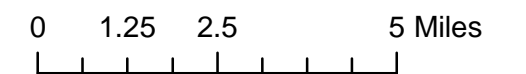
Spotsylvania County Thoroughfare Plan



Legend

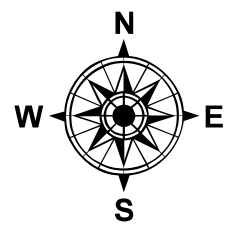
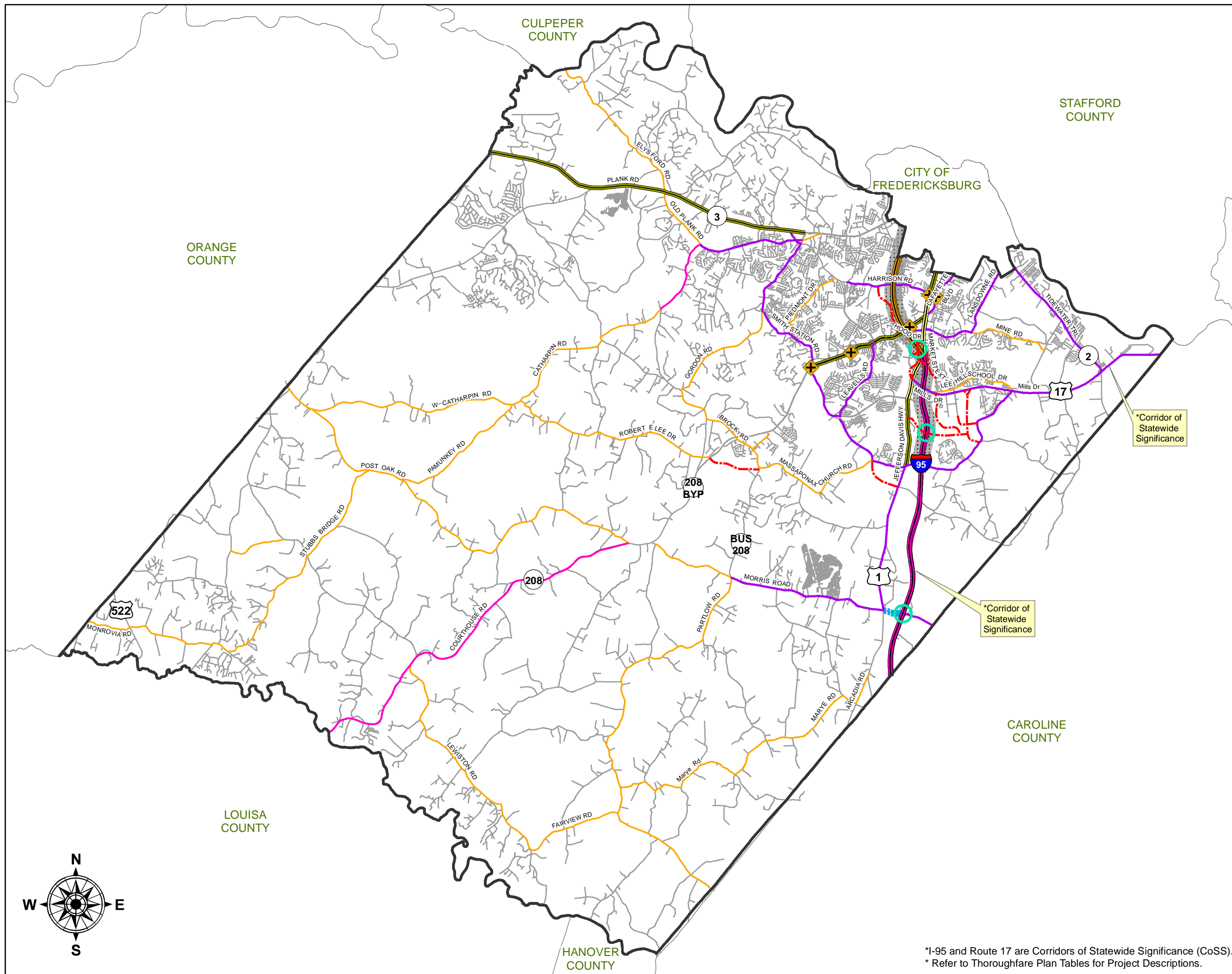
- Intersection Improvements
- Interchange Improvements
- Other Road Types
- 2-Lane Improvement
- 3-Lane Improvement
- 4-Lane Improvement (Divided)
- 4-Lane Improvement (Undivided)
- 6-Lane Improvement (Divided)
- 8-Lane Improvement (Divided)
- CD Lanes
- Interstate 95
- New Concept Facility
- Route 606 Corridor Study
- I95 Interchange Study Area*

*Studies to include feasibility of Collector-Distributor (CD) Lanes in both directions between Exit 130 and new access points (Harrison Road (620) & Courthouse Road (208)) and include North Bound CD lanes between Route 3 and US 17 (NB Rappahannock River Crossing project). A potential new interchange south of Exit 126 and additional Exit 126 improvements may include the "J" Ramp, Super Ramp, Alternative 3 (Improvements to US 1 and Southpoint Parkway), Exit 126 to US 1 ramp and signal improvements or other recommendations from the KH Interchange Modification Report and companion Planning Study.



1 in = 3 miles
Approximately

Adopted November 14, 2013;
Updated September 9, 2016



*I-95 and Route 17 are Corridors of Statewide Significance (CoSS).
* Refer to Thoroughfare Plan Tables for Project Descriptions.